

DECLARATION OF CONFORMITY

Hygienic Components

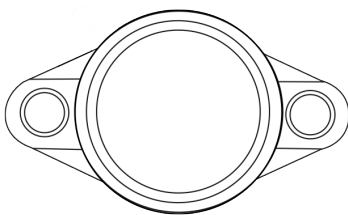
Waterproof line: MOUNTED BEARING UNITS AND ACCESSORIES

Housing Type: PPLW, TBLW, TPLW, NFLW, FBLW, FPLW

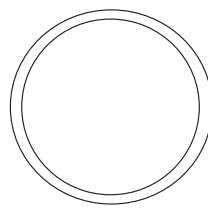
Inserts: MB, MUC, MBG

Accessories Type: DW, CW, COW

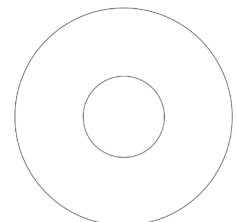
MOVET® Components, HADI GmbH Industrievertretungen, hereby declare that the listed materials applied for the products comply with the demands for materials used within the hygienic industries like food and pharma. All information is based on current state of knowledge and is subject to change.



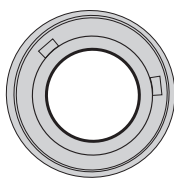
Thermoplastic Housing waterproof



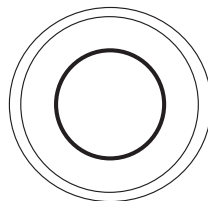
Cap Closed waterproof



Backseal blue



Stainless Steel Insert



Cap Open waterproof

The declaration of materials concerns the following applications:

Application:**Flange Bearing Housing waterproof**

Material type housing: Thermoplastic, polybutylene terephthalate

Colors: blue

Material type mounting holes: Stainless Steel, 1.4301, AISI 304 (X5CrNi18-10)

Resistance: High chemical resistance

Range of temperature: Min -35 C° to Max +90C°

Compliance:

EU: Regulation No. 10/2011/EC on plastic materials and articles intended to come into contact with food and its amendment 1282/2011, 1183/2012/EC and 174/2015, having regard to Commission Regulation **(EC) No. 1935/2004** of the European Parliament and of the Council of 27 October 2004 on materials and articles intended to come into contact with food and repealing Directives 2002/72 as amended by commission directives 2004/1/EC, 2004/19/EC, 2005/79/EC, 2007/19/EC, 2008/39/EC and regulation (EC) No. 975/2009. We add only substances that are listed in the list of authorized monomers, other starting substances, additives, and polymer production aids of Directive 10/2011/EC ANNEX I. No monomers with specific migration limit (SML) are used in the mentioned product.

Specific migration limits of listed components must also be ensured by the person who introduces the articles into circulation in accordance with COUNCIL DIRECTIVE 82/711/EEC and further amendments. We draw your attention to the fact that the EU-Directive 10/2011/EC, which applies to all EU-member States, includes a limit of 60 mg/kg food or 10 mg/dm² on the overall migration from finished plastic articles into food. The migration should be measured using the actual foodstuff or the appropriate food simulants at the real time/temperature conditions of use, according to the rules specified in Regulation 10/2011/EC.

It is the responsibility of the manufacturer to check and confirm that the final article meets both the technical and regulatory requirements of the application.

Dual Use Additives: Dual use additives are not used for production of this product.

US: We confirm that all components of the mentioned products are listed on the positive List of „Indirect“ Additives Used in Food Contact Substances, based on Title 21 of the U.S. Code of Federal Regulations (21CFR) part 175-178. The base resin in this product meets the FDA requirements contained in the Code of Federal Regulations in 21 CFR 177.1660.

FDA: Guideline 21 CFR 175-178

Application:**Bearing insert for Housing**

Material type Insert: Stainless Steel, 1.4125, AISI 440C (X105CrMo17)

Lubrication: EXXON Mobilgrease FM222 for food processing industry

Approvals: NSF-H1, DIN 51825, Halal, Kosher/Parve

Application:**Backseal blue and Caps for Bearing Housings waterproof**

Material type: Thermoplastisches Polyurethan-Elastomer (TPU)

Colors: blue

Hardness (Shore A): 95 ± 5

Density (g / cm³): 1,11 ± 0,03

Compliance:

Corresponds in composition:

US: The Positive List according to § 177.2600, CFR 21, „Rubber Articles Intended for Repeated Use“, the Food and Drug Administration (**FDA**).

EU: Regulation No. 10/2011/EC and **1935/2004 / EC**.